

Linha **SK**



**CONEXÕES**  
FITTINGS  
RACCORDS  
STECKANSCHLÜSSE



**VÁLVULAS DE FECHAMENTO**  
TAPS  
COUPLEURS  
KUGELHAHN



**REGULADORES DE VELOCIDADE**  
FLOW REGULATORS  
REGULATEURS DE DEBIT  
DROSSELVERSCHRÄUBUNG





**2008:** nasce na província de Ningbo (RPC) a **SISTEM CHINA CO. LTD.**, uma sociedade resultado da joint venture entre a SISTEM PNEUMATICA, cuja qualidade é reconhecida há muito tempo no mercado europeu, e um parceiro chinês de produção, já presente no mercado asiático com clientela no mundo inteiro e portanto colaborador estratégico.

A **SISTEM CHINA CO. LTD** se estabelece no mercado com o objetivo de produzir uma linha de produtos para automação pneumática, para dar uma resposta, cada vez mais rápida, às demandas de seus clientes, em relação as suas necessidades e às exigências de mercado.

A contribuição da SISTEM PNEUMATICA na parceria é fundada na sua experiência, de mais de trinta anos, em realizar e projetar componentes para automação pneumática. Mediante a revisão técnica de detalhes existentes e projetando novas componentes, o padrão de qualidade da produção da **SISTEM CHINA CO. LTD** equipara-se aos parâmetros da SISTEM PNEUMATICA.



**2008:** wird die Firma **SISTEM CHINA CO. LTD** in der Provinz von Ningbo (PRC) gegründet. Sie ist ein Joint Venture aus der Firma SISTEM PNEUMATICA, deren hohe Qualität auf dem europäischen Markt bekannt ist und einem chinesischen Hersteller, der bereits in Asien tätig ist. Hier vereinen sich verschiedene Strategien, um den Weltmarkt mit seinen Kunden bedienen zu können.

**SISTEM CHINA CO. LTD** wurde gegründet, um ein komplettes Druckluftverschraubungsprogramm anzubieten und um so sämtlichen Kundenbedürfnissen auf dem Markt gerecht zu werden. Der Beitrag von SISTEM PNEUMATICA basiert auf 30-jähriger Erfahrung in der Herstellung und Konstruktion von pneumatischen Verbindungselementen.

Durch die Weiterentwicklung und Verbesserung der bestehenden Technologie und des Designs hat die Qualität der Produkte von **SISTEM CHINA CO. LTD** den gleichen Standard von SISTEM PNEUMATICA erreicht.



A proximidade com SHANGAI situa a SISTEM CHINA CO. LTD no centro daquele que é considerado, cada vez mais, o centro produtivo e econômico do cenário mundial.



In der Nähe von Shanghai, im Herzen eines Wirtschaftszentrums, das als wirtschaftliche und produktive Metropole des internationalen Marktes steht, entstand SISTEM CHINA CO. LTD.



CHO resultado dessa união técnico-produtiva é a SERIE K, uma linha completa de conexões, reguladoras e registros nos quais, graças à própria experiência, SISTEM PNEUMATICA quis inserir sua rosca cilíndrica com O Ring do tipo EASY, para garantir a máxima vedação em qualquer aplicação.



Das Ergebnis dieser technischen und produktiven Verbindung ist die Serie K, ein komplettes Programm von Verschraubungen, Drosseln und Kupplungen, zu denen SISTEM PNEUMATICA mit seinen reichhaltigen Erfahrungen das zylindrische EASY Gewinde mit der patentierten O-Ring-Kammerung beigetragen hat, um maximale Möglichkeiten für jede Anwendung zu gewährleisten.



**2008:** the birth of **SISTEM CHINA CO. LTD** in Ningbo province (PRC), a company born from a joint venture between SISTEM PNEUMATICA, whose quality has always been recognised in the European market, and a productive Chinese partner already operating in the Asian sector with several strategic associates and a client-base across the world.

**SISTEM CHINA CO. LTD** was put on the market with an aim to producing a range of items for pneumatic fluid power application and to provide a rapid response to the demands of its clients in relation to the needs of the market.

The contribution of SISTEM PNEUMATICA to the joint venture is based on thirty years of experience in the production and design of parts for pneumatic fluid power application. Through the development of existing technology and the design of new components, the level of quality in production by **SISTEM CHINA CO. LTD** is equal to the standards of SISTEM PNEUMATICA.



**2008:** Née en province de Ningbo (PRC) **SISTEM CHINA CO. LTD.**, elle est le résultat de l'association entre SISTEM PNEUMATICA, dont la qualité a toujours été reconnue sur le marché européen, et un fabricant chinois, déjà installé sur le territoire asiatique livrant des clients dans le monde entier, et qui est donc un stratégique collaborateur.

**SISTEM CHINA CO. LTD.** se positionne sur le marché dans le but de produire une gamme d'articles pour l'automatisation pneumatique, pour répondre plus rapidement aux demandes de ses clients, par rapport à leurs besoins et aux exigences du marché.

La contribution de SISTEM PNEUMATICA à l'entreprise commune est fondée sur ses trente ans d'expérience dans la réalisation et conception de composants pour l'automatisation pneumatique. Grâce à l'examen technique des pièces existantes et la conception de nouveaux composants, le niveau de qualité de la production de **SISTEM CHINA CO. LTD.** est égal aux standards de SISTEM PNEUMATICA.



Its proximity to SHANGAI puts SISTEM CHINA CO. LTD at the heart of an area which is increasingly regarded as the economic and manufacturing centre of the worldwide scene.



La proximité de SHANGAI place SISTEM CHINA CO. LTD. au centre de ce qui est de plus en plus considéré comme le centre productif et économique de la scène mondiale.

Linha **SK**



The result of this technical-productive union is SERIE K, a complete range of fittings, flow regulators and couplings to which SISTEM PNEUMATICA, with its rich experience, has added its EASY cylindrical thread with O-ring to guarantee the maximum performance in every application.



Le fruit de cette union technique-productive est la série K, une ligne complète de raccords, régulateurs et coupleurs dans lesquels, forte de son expérience, SISTEM PNEUMATICA a voulu mettre son filet cylindrique avec O-ring de type EASY pour assurer la maximum d'étanchéité dans n'importe quelle application.



**ESPECIFICAÇÃO TÉCNICA** - SPECIFICATION SHEET - FICHE TECHNIQUE - TECHNISCHES BLATT

**RACCORDI AD INNESTO RAPIDO**  
**PUSH-IN FITTINGS**  
**RACCORDS INSTANTANES**  
**STECKANSCHLÜSSE**

**MATERIALI DI COSTRUZIONE**

OTTONE E ZAMA NICHELATI  
TECNOPOLIMERO  
PINZA INOX  
GUARNIZIONI IN GOMMA ANTIOILIO NBR  
PRESSIONE MAX D'ESERCIZIO: 10 BAR (1 MPa)  
TEMPERATURA DI LAVORO: 0°C (273°K), +60°C (333°K)

**MATERIALS OF CONSTRUCTION**

NICKEL-PLATED BRASS AND ZAMA  
TECHNOPOLYMER  
STAINLESS STEEL PLIERS  
OIL-PROOF RUBBER PACKINGS NBR  
MAX WORKING PRESSURE: 10 BAR (1 MPa)  
WORKING TEMPERATURE: 0°C (273°K), +60°C (333°K)

**MATERIEL DE FABRICATION**

LAITON ET ZAMA NICKELÉ  
TECHNOPOLYMER  
PINCE EN ACIER INOX  
JOINTS EN CAOUTCHOUC ANTI-HUILE NBR  
PRESSION MAXI D'EXERCICE: 10 BAR (1 MPa)  
TEMPERATURE DE TRAVAIL: 0°C (273°K), +60°C (333°K)

**HERSTELLUNGSMATERIAL**

MESSING UND ZAMAK, VERNICKELT  
TECHNOPOLYMER  
ZAHNSCHEIBE AUS EDELSTAHL  
DICHTUNGEN NBR, ÖLBESTÄNDIG  
HÖCHSTBETRIEBSDRUCK: 10 BAR (1 MPa)  
BETRIEBSTEMPERATUREN: 0°C (273°K), +60°C (333°K)

**CORPO PRINCIPAL**  
MAIN BODY  
CORPS PRINCIPAL  
KÖRPER

**ANEL DE DESENGATE**  
RELEASE RING  
POUSOIR  
DRUCKRING



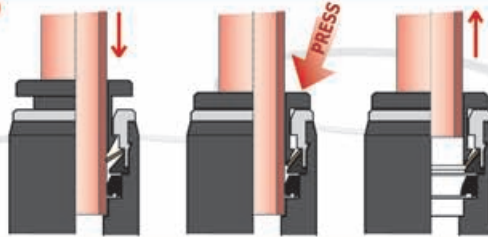
**CONECTOR ROSCADO**  
THREADED CONNECTOR  
CONNEXION FILETEE  
GEWINDEANSCHLUSS

**ENGATE ROSCADO**  
THREADED CONNECTOR  
CONNEXION FILETEE  
GEWINDEANSCHLUSS



**SISTEMA DI AGGANCIO DEL TUBO**

SYSTEM OF COUPLING OF THE TUBE  
SYSTEME D'ACCROCHAGE DU TUBE  
ROHRLÖSESYSYSTEM



AZIONANDO TOTALMENTE L'ANELLO DI SGANCIO, SI COMANDA L'APERTURA DELL'ANELLO DI BLOCCAGGIO OLTRE IL DIAMETRO DEL TUBO, GARANTENDO L'ESTRAZIONE SENZA DANNO.

BY PUSHING THE RELEASE RING, THE INNER STOP RING EXPANDS TO A DIAMETER GREATER, THAN THE HOSE OUT SIDE DIAMETER ALLOWING EXTRACTION WITHOUT DAMAGE.

EN ENFONÇANT A FOND L'ANNEAU DE DECHORAGE, ON COMMANDE L'OUVERTURE DE L'ANNEAU DE BLOCCAGE AU - DELÀ DU DIAMÈTRE DU TUBE GARANTISSANT L'EXTRACTION SANS DOMMAGE.

BEIM HERUNTERDRÜCKEN DES DRUCKRINGS BIS ZUM ANSCHLAG, ÖFFNET SICH DIE ZAHNSCHEIBE UND DAS ROHR KANN SCHADLOS HERAUS GEZOGEN WERDEN.

**ATTACCO FILETTATO**

THREADED CONNECTOR  
CONNEXION FILETEE  
GEWINDEANSCHLUSS



IL SISTEMA DI TENUTA CON O-RING sul FILETTO tipo EASY assicura il minimo ingombro della chiave esagonale esterna e garantisce applicazioni sicure su sedi filettate imperfette (brevetto SISTEM PNEUMATICA).

THE SEAL SYSTEM WITH O-RING ON THE THREAD ensures the minimum hindrance of the outside hexagonal key and it grants sure applications on imperfect threaded seats (SISTEM PNEUMATICA patent).

Le SYSTÈME D'ÉTANCHEITE AVEC O-RING SUR LE FILETAGE assure le minimum encombrement de la clef hexagonale extérieure et il garanti applications sûres sur sièges filetés imparfaites.

Die KAMMERUNG DES O-RING (SISTEM PNEUMATICA-Patent) der EASY-Verschraubung ermöglicht eine Dichtung auch bei fehlerhaften Gewinde.



**SMUSSO GRANDE** d'invito del filetto femmina.  
BIG INVITATION CHAMFER of the female thread.  
Arrondissement GRAND D'INVITATION sur le filetage femelle.  
Innengewinde mit GROSSER SENKUNG.



**SMUSSO PICCOLO** d'invito del filetto femmina.  
SMALL INVITATION CHAMFER of the female thread.  
Arrondissement PETIT D'INVITATION sur le filetage femelle.  
Innengewinde mit GERINGER SENKUNG.



**Filettatura NON PERPENDICOLARE** al piano di posa.  
Thread NOT PERPENDICULAR to the substructure.  
Filetage PAS PERPENDICULAIRE au plan de pose.  
Innengewinde mit NEIGUNG ZUR OBERFLÄCHE.

**Filettatura su SUPERFICI CURVE**  
Thread on CURVED SURFACES  
Filetage sur SURFACES COURBES  
Gewinde an runden OBERFLÄCHEN

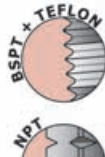


**ATTACCO FILETTATO**

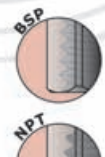
THREADED CONNECTOR  
CONNEXION FILETEE  
GEWINDEANSCHLUSS



**FILETTO CILINDRICO CON O-RING**  
PARALLEL THREAD WITH O-RING  
FILET CYLINDRIQUE AVEC JOINT MONTE  
ZYLINDRISCHES GEWINDE MIT O-RING



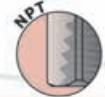
**FILETTO CONICO CON TEFLON**  
TAPERED THREAD WITH PTFE  
FILET CONIQUE AVEC TEFLON  
KONISCHES GEWINDE MIT TEFLON



**FILETTO CILINDRICO FEMMINA**  
FEMALE PARALLEL THREAD  
FILET CYLINDRIQUE FEMELLE  
ZYLINDRISCHES INNENGEWINDE



**FILETTO CONICO NPT**  
TAPERED THREAD NPT  
FILET CONIQUE NPT  
KONISCHES GEWINDE NPT

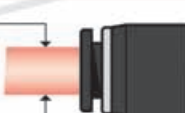


**FILETTO FEMMINA NPT**  
FEMALE NPT THREAD  
FILET FEMELLE NPT  
INNENGEWINDE NPT

**TIPI DI TUBO INNESTABILI**

TUBES D'ACCOUPEMENT  
SUITABLE FOR  
SCHLAUCHTYPEN

**POLIURETANO**  
**NYLON (PA6)**  
**RILSAN (PA11)**



Ø4÷Ø10 (±0,05) - Ø12÷Ø16 (±0,1)  
Ø1/4"÷Ø3/8" (±0,05) - Ø1/2" (±0,1)

**O-RING/GUARNIZIONI**

OIL-PROOF RUBBER  
JOINTS  
DICHTUNGEN

**ESENTI DA SILICONE**  
SILICONE FREE  
LIBRES DE SILICONE  
LABSFREI



**CODIFICAÇÃO ARTIGO**

ITEM CODIFICATION  
CODIFICATION ARTICLES  
BESTELLNUMMERSYSTEM

**K108040T**

<b>ARTIGO</b> SERIES SERIE PRODUIT ARTIKELSERIE	<b>ROSCA</b> THREAD FILET GEWINDE	<b>TUBO</b> TUBE TUBE SCHLAUCH	<b>ROSCA</b> THREAD TYPE TYPE DE FILET GEWINDEART
--	--	---	--



serie **SK**

**CONEXÕES**

FITTINGS - RACCORDS - STECKANSCHLÜSSE

**SISTEM**  
DO BRASIL Ltda.

ESPECIFICAÇÃO TÉCNICA - SPECIFICATION SHEET - FICHE TECHNIQUE - TECHNISCHES BLATT

# CONEXÕES INSTANTÂNEAS

PUSH-IN FITTINGS  
RACCORDS INSTANTANES  
STECKANSCHLÜSSE



### O-RING/VEDAÇÕES

OIL-PROOF RUBBER  
JOINTS  
DICHTUNGEN



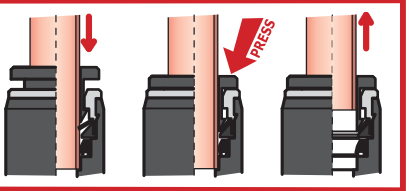
**SEM SILICONE**  
SILICONE FREE  
LIBRES DE SILICONE  
LABSFREI

### ENGATE ROSCADO

THREADED CONNECTOR  
CONNEXION FILETEE  
GEWINDEANSCHLUSS

### Tipo DE ACOPLAMENTO / DESACOPLAMENTO TUBO

type of TUBE COUPLING  
type d'ACCROCHEMENT TUBE  
FUNKTIONSWEISE



### TUBO - TUBE - TUBE - SCHLAUCH

#### TIPOS DE TUBO

TUBES D'ACCOUPLMENT  
SUITABLE FOR  
SCHLAUCHTYPEN

**POLIURETANO  
NYLON (PA6)  
RILSAN (PA11)**

**Ø4÷Ø10 (±0,05) - Ø12÷Ø16 (±0,1)  
Ø1/4"÷Ø3/8" (±0,05) - Ø1/2" (±0,1)**



A CONFIGURAÇÃO REVOLUCIONÁRIA DE ASSEMENTO, DE ROSCA DA SÉRIE EASY garante uma perfeita vedação através de um O-RING mesmo em sedes rosçadas imperfeitas (Patente SISTEMA PNEUMÁTICA)

The SEAL SYSTEM WITH O-RING ON THE THREAD ensures the minimum hindrance of the outside hexagonal key and it grants sure applications on imperfect threaded seats (SISTEM PNEUMATICA patent).

Le SYSTEME D'ETANCHEITE AVEC O-RING SUR LE FILETAGE assure le minimum encombrement de la clef hexagonale extérieure et il garanti applications sûres sur sièges filetés imparfaites.

Die KAMMERUNG DES O-RING (SISTEM PNEUMATICA-Patent) der EASY-Verschraubung ermöglicht eine Dichtung auch bei fehlerhaftem Gewinde.



#### CHANFRO GRANDE de introdução

BIG INVITATION CHAMFER of the female thread.  
Arrondissement GRAND D'INVITATION sur le filetage femelle.  
Innengewinde mit GROSSER SENKUNG.



#### CHANFRO PEQUENO de introdução

SMALL INVITATION CHAMFER of the female thread.  
Arrondissement PETIT D'INVITATION sur le filetage femelle.  
Innengewinde mit GERINGER SENKUNG.

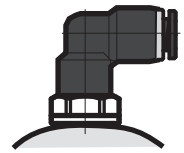


#### Rosca NÃO PERPENDICULAR ao plano

Thread NOT PERPENDICULAR to the substructure,  
Filetage PAS PERPENDICULAIRE au plan de pose.  
Innengewinde mit NEIGUNG ZUR OBERFLÄCHE.

#### Rosca sobre SUPERFÍCIES CURVAS

Thread on CURVED SURFACES  
Filetage sur SURFACES COURBES  
Gewinde an runden OBERFLÄCHEN



### CARACTERÍSTICAS TÉCNICAS

LATAO NIQUELADO  
TECNOPLÍMERO  
ZAMA NIQUELADA  
PINÇA INOX  
VEDAÇÕES EM NBR ANTÍOLEO  
PRESSÃO MÁX DE TRABALHO: 10 BAR (1 MPa)  
TEMPERATURA DE TRABALHO: 0°C (273°K), +60°C (333°K)

### CARACTERISTIQUES TECHNIQUES

LAITON NICKELÉ  
TECNOPOLYMERÉ  
ZAMA NICKELÉE  
PINCE EN ACIER INOX  
JOINTS EN CAOUTCHOUC ANTI-HUILE NBR  
PRESSION MAXI D'EXERCICE: 10 BAR (1 MPa)  
TEMPERATURE DE TRAVAIL: 0°C (273°K), +60°C (333°K)

### TECHNICAL FEATURES

NICKEL-PLATED BRASS  
TECHNOPOLYMER  
NICKEL-PLATED ZAMA  
STAINLESS STEEL PLIERS  
OIL-PROOF RUBBER PACKINGS NBR  
MAX WORKING PRESSURE: 10 BAR (1 MPa)  
WORKING TEMPERATURE: 0°C (273°K), +60°C (333°K)

### TECHNISCHE DATEN

MESSING, VERNICKELT  
TECHNOPOLYMER  
ZAMAK, VERNICKELT  
ZAHNSCHEIBE AUS EDELSTAHL  
DICHTUNGEN NBR, ÖLBESTÄNDIG  
HÖCHSTBETRIEBSDRUCK: 10 BAR (1 MPa)  
BETRIEBSTEMPERATUREN: 0°C (273°K), +60°C (333°K)



serie **SK**



# CONEXÕES INSTANTÂNEAS

**PUSH-IN FITTINGS  
RACCORDS INSTANTANES  
STECKANSCHLÜSSE**

**TUBO - TUBE - TUBE - SCHLAUCH**

**TIPOS DE TUBOS RECOMENDADOS**  
TUBES D'ACCOUPEMENT  
SUITABLE FOR  
SCHLAUCHTYPEN

**POLIURETANO  
NYLON (PA6)  
RILSAN (PA11)**

**Ø4÷Ø10 (±0,05) - Ø12÷Ø16 (±0,1)  
Ø1/4"÷Ø3/8" (±0,05) - Ø1/2" (±0,1)**



**O-RING/VEDAÇÕES**

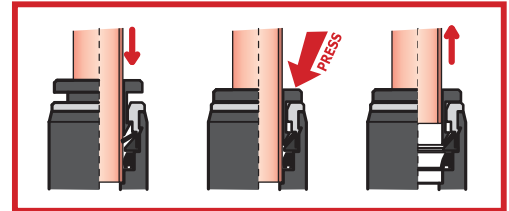
OIL-PROOF RUBBER  
JOINTS  
DICHTUNGEN

**SEM SILICONE**  
SILICONE FREE  
LIBRES DE SILICONE  
LABSFREI

**CONECTOR ROSCADO**  
THREADED CONNECTOR  
CONNEXION FILETEE  
GEWINDEANSCHLUSS

	<b>ROSÇA CILINDRICA COM O O-RING</b> PARALLEL THREAD WITH O-RING FILET CYLINDRIQUE AVEC JOINT MONTE ZYLINDRISCHES GEWINDE MIT O-RING		<b>ROSÇA MÉTRICA COM O-RING</b> METRIC THREAD WITH O-RING FILET METRIQUE AVEC JOINT MONTE METRISCHES GEWINDE MIT O-RING
	<b>ROSÇA CÔNICA COM TEFLON</b> TAPERED THREAD WITH PTFE FILET CONIQUE AVEC TEFLON KONISCHES GEWINDE MIT TEFLON		<b>ROSÇA CILINDRICA FÊMEA</b> FEMALE PARALLEL THREAD FILET CYLINDRIQUE FEMELLE ZYLINDRISCHES INNENGEWINDE
	<b>ROSÇA CÔNICA NPT</b> TAPERED THREAD NPT FILET CONIQUE NPT KONISCHES GEWINDE NPT		<b>ROSÇA FÊMEA NPT</b> FEMALE NPT THREAD FILET FEMELLE NPT INNENGEWINDE NPT

**TIPO DE ACOPLAMENTO  
/DESACOPLAMENTO**  
type of TUBE COUPLING  
type d'ACCROCHEMENT TUBE  
FUNKTIONSWEISE



### CARACTERÍSTICAS TÉCNICAS

LATÃO NIQUELADO  
TECNOPLÍMERO  
ZAMA NIQUELADA  
PINÇA INOX  
VEDAÇÕES EM NBR ANTIÓLEO  
PRES SÃO MAX DE TRABALHO: 10 BAR (1 MPa)  
TEMPERA TURA DE TRABALHO: 0°C (273°K), +60°C (333°K)

### CARACTERISTIQUES TECHNIQUES

LAITON NICKELÉ  
TECNOPLYMÈRE  
ZAMA NICKELÉE  
PINCE EN ACIER INOX  
JOINTS EN CAOUTCHOUC ANTI-HUILE NBR  
PRESSION MAXI D'EXERCICE: 10 BAR (1 MPa)  
TEMPERATURE DE TRAVAIL: 0°C (273°K), +60°C (333°K)

### TECHNICAL FEATURES

NICKEL-PLATED BRASS  
TECNOPOLYMER  
NICKEL-PLATED ZAMA  
STAINLESS STEEL PLIERS  
OIL-PROOF RUBBER PACKINGS NBR  
MAX WORKING PRESSURE: 10 BAR (1 MPa)  
WORKING TEMPERATURE: 0°C (273°K), +60°C (333°K)

### TECHNISCHE DATEN

MESSING, VERNICKELT  
TECNOPOLYMER  
ZAMAK, VERNICKELT  
ZAHNSCHEIBE AUS EDELSTAHL  
DICHTUNGEN NBR, ÖLBESTÄNDIG  
HÖCHSTBETRIEBSDRUCK: 10 BAR (1 MPa)  
BETRIEBSTEMPERATUREN: 0°C (273°K), +60°C (333°K)





[ 2120 ] - [ Conexões Série "K" ]

<b>K10</b>	[Conex.Reta c/Rosca BSPT - Teflon]	Cód	fil./thr.	Tube Ø
		K108040T	1/8	4
		K104040T	1/4	4
		K108060T	1/8	6
		K104060T	1/4	6
		K103060T	3/8	6
		K102060T	1/2	6
		K108080T	1/8	8
		K104080T	1/4	8
		K103080T	3/8	8
		K102080T	1/2	8
		K108100T	1/8	10
		K104100T	1/4	10
		K103100T	3/8	10
		K102100T	1/2	10
		K108120T	1/8	12
		K104120T	1/4	12
		K103120T	3/8	12
		K102120T	1/2	12
		K103140T	3/8	14
		K102140T	1/2	14
		K103160T	3/8	16
		K102160T	1/2	16
	[Conex.Reta c/Rosca NPT Tubo INCH]	K10K630	1/8	6,35(1/4")
		K10X630	1/4	6,35(1/4")
		K10Y630	3/8	6,35(1/4")
		K10K790	1/8	7,93(5/16")
		K10X790	1/4	7,93(5/16")
		K10Y790	3/8	7,93(5/16")
		K10K950	1/8	9,52(3/8")
		K10X950	1/4	9,52(3/8")
		K10Y950	3/8	9,52(3/8")
		K10Z950	1/2	9,52(3/8")
		K10X270	1/4	12,7(1/2")
		K10Y270	3/8	12,7(1/2")
		K10Z270	1/2	12,7(1/2")



<b>K10</b>	[Conex.Reta c/Rosca BSP + Oring]	Cód	fil./thr.	Tube Ø
		K105048	M5	4
		K106048	M6	4
		K108048	1/8	4
		K104048	1/4	4
		K105068	M5	6
		K106068	M6	6
		K108068	1/8	6
		K104068	1/4	6
		K103068	3/8	6
		K102068	1/2	6
		K108088	1/8	8
		K104088	1/4	8
		K103088	3/8	8
		K102088	1/2	8
		K108108	1/8	10
		K104108	1/4	10
		K103108	3/8	10
		K102108	1/2	10
		K108128	1/8	12
		K104128	1/4	12
		K103128	3/8	12
		K102128	1/2	12
		K103148	3/8	14
		K102148	1/2	14
		K103168	3/8	16
		K102168	1/2	16



<b>K10</b>	[Conex. Reta REDUZIDA c/Rosca BSPT - Teflon]	Cód	fil./thr.	Tube Ø
		K10T8040T	1/8	4
		K10T4040T	1/4	4
		K10T8060T	1/8	6
		K10T4060T	1/4	6
		K10T3060T	3/8	6
		K10T2060T	1/2	6
		K10T8080T	1/8	8
		K10T4080T	1/4	8
		K10T3080T	3/8	8
		K10T2080T	1/2	8
		K10T8100T	1/8	10
		K10T4100T	1/4	10
		K10T3100T	3/8	10
		K10T2100T	1/2	10
		K10T8120T	1/8	12
		K10T4120T	1/4	12
		K10T3120T	3/8	12
		K10T2120T	1/2	12
		K10T3140T	3/8	14
		K10T2140T	1/2	14
		K10T3160T	3/8	16
		K10T2160T	1/2	16
	[Conex.Reta REDUZIDA c/Rosca NPT Tubo INCH]	K10TK630	1/8	6,35(1/4")
		K10TX630	1/4	6,35(1/4")
		K10TK790	1/8	7,93(5/16")
		K10X790	1/4	7,93(5/16")
		K10TY790	3/8	7,93(5/16")
		K10TX950	1/4	9,52(3/8")
		K10TY950	3/8	9,52(3/8")
		K10TZ950	1/2	9,52(3/8")
		K10TX270	1/4	12,7(1/2")
		K10TY270	3/8	12,7(1/2")
		K10TZ270	1/2	12,7(1/2")





<b>E10</b>	[Conex.Reta c/Rosca BSP + Oring]	Cód	fil./thr.	Tube Ø
		E105048	M5	4
		E107147	M7x1	4
		E108047	1/8	4
		E104047	1/4	4
		E105068	M5	6
		E107167	M7x1	6
		E108067	1/8	6
		E104067	1/4	6
		E1010187	M10x1	8
		E108087	1/8	8
		E104087	1/4	8
		E103087	3/8	8
		E104107	1/4	10
		E103107	3/8	10
		E102107	1/2	10
		E104127	1/4	12
		E103127	3/8	12
		E102127	1/2	12






[ 2120 ] - [ Conexões Série "K" ]

**K10T** [Conex. Reta REDUZIDA c/ Rosca BSPT - Oring]

Cód	fil./thr.	Tubo Ø
K10T5048	M5	4
K10T6048	M6	4
K10T8048	1/8	4
K10T4048	1/4	4
K10T5068	M5	6
K10T6068	M6	6
K10T8068	1/8	6
K10T4068	1/4	6
K10T3068	3/8	6
K10T2068	1/2	6
K10T8088	1/8	8
K10T4088	1/4	8
K10T3088	3/8	8
K10T2088	1/2	8
K10T8108	1/8	10
K10T4108	1/4	10
K10T3108	3/8	10
K10T2108	1/2	10
K10T8128	1/8	12
K10T4128	1/4	12
K10T3128	3/8	12
K10T2128	1/2	12
K10T3148	3/8	14
K10T2148	1/2	14
K10T3168	3/8	16
K10T2168	1/2	16

[Conex. Reta c/Rosca NPT Tubo INCH]



**K23** [Conex. Reta c/Rosca FEMEA BSP]



Cód	fil./thr.	Tubo Ø
K235040	M5	4
K236040	M6	4
K238040	1/8	4
K234040	1/4	4
K235060	M5	6
K236060	M6	6
K238060	1/8	6
K234060	1/4	6
K233060	3/8	6
K232060	1/2	6
K238080	1/8	8
K234080	1/4	8
K233080	3/8	8
K232080	1/2	8
K238100	1/8	10
K234100	1/4	10
K233100	3/8	10
K232100	1/2	10
K238120	1/8	12
K234120	1/4	12
K233120	3/8	12
K232120	1/2	12
K233140	3/8	14
K232140	1/2	14
K233160	3/8	16
K232160	1/2	16

[Conex. Reta c/Rosca NPT Tubo INCH]



**K20** [Conex. em "L" c/Rosca BSPT - Teflon]




cod	fil./thr.	tubo Ø
K208040T	1/8	4
K204040T	1/4	4
K208060T	1/8	6
K204060T	1/4	6
K203060T	3/8	6
K202060T	1/2	6
K208080T	1/8	8
K204080T	1/4	8
K203080T	3/8	8
K202080T	1/2	8
K208100T	1/8	10
K204100T	1/4	10
K203100T	3/8	10
K202100T	1/2	10
K208120T	1/8	12
K204120T	1/4	12
K203120T	3/8	12
K202120T	1/2	12
K203140T	3/8	14
K202140T	1/2	14
K203160T	3/8	16
K202160T	1/2	16

[Conex. em "L" c/Rosca NPT Tubo INCH]



K20K630	1/8	6,35(1/4")
K20X630	1/4	6,35(1/4")
K20Y630	3/8	6,35(1/4")
K20K790	1/8	7,93(5/16")
K20X790	1/4	7,93(5/16")
K20Y790	3/8	7,93(5/16")
K20K950	1/8	9,52(3/8")
K20X950	1/4	9,52(3/8")
K20Y950	3/8	9,52(3/8")
K20Z950	1/2	9,52(3/8")
K20X270	1/4	12,7(1/2")
K20Y270	3/8	12,7(1/2")
K20Z270	1/2	12,7(1/2")

**K20L** [Conex. em "L" Longo c/Rosca BSPT - Teflon]




cod	fil./thr.	tubo Ø
K20L8040T	1/8	4
K20L4040T	1/4	4
K20L8060T	1/8	6
K20L4060T	1/4	6
K20L3060T	3/8	6
K20L2060T	1/2	6
K20L8080T	1/8	8
K20L4080T	1/4	8
K20L3080T	3/8	8
K20L2080T	1/2	8
K20L8100T	1/8	10
K20L4100T	1/4	10
K20L3100T	3/8	10
K20L2100T	1/2	10
K20L8120T	1/8	12
K20L4120T	1/4	12
K20L3120T	3/8	12
K20L2120T	1/2	12
K20L3140T	3/8	14
K20L2140T	1/2	14
K20L3160T	3/8	16
K20L2160T	1/2	16

[Conex. Reta c/Rosca NPT Tubo INCH]



K20LK630	1/8	6,35(1/4")
K20LX630	1/4	6,35(1/4")
K20LY630	3/8	6,35(1/4")
K20LK790	1/8	7,93(5/16")
K20LX790	1/4	7,93(5/16")
K20LY790	3/8	7,93(5/16")
K20LX950	1/4	9,52(3/8")
K20LY950	3/8	9,52(3/8")
K20LZ950	1/2	9,52(3/8")
K20LX270	1/4	12,7(1/2")
K20LY270	3/8	12,7(1/2")
K20LZ270	1/2	12,7(1/2")





[ 2120] - [Conexões Série "K" ]

	cod	fil./thr.	tubo Ø
<b>K20</b> [Conex. em "L" c/ Rosca BSPT - Oring]	K205048	M5	4
	K206048	M6	4
	K208047	1/8	4
	K204047	1/4	4
	K205068	M5	6
	K206068	M6	6
	K208067	1/8	6
	K204067	1/4	6
	K203068	3/8	6
	K202067	1/2	6
	K208087	1/8	8
	K204087	1/4	8
	K203088	3/8	8
	K202087	1/2	8
	K208108	1/8	10
	K204107	1/4	10
	K203108	3/8	10
	K202107	1/2	10
	K208128	1/8	12
	K204127	1/4	12
K203128	3/8	12	
K202127	1/2	12	
K203147	3/8	14	
K202147	1/2	14	
K203167	3/8	16	
K202167	1/2	16	



	cod	fil./thr.	tubo Ø
<b>K23</b> [Conex. Reta c/Rosca FEMEA BSP]	K20L5048	M5	4
	K20L6048	M6	4
	K20L8048	1/8	4
	K20L4048	1/4	4
	K20L5068	M5	6
	K20L6068	M6	6
	K20L8068	1/8	6
	K20L4068	1/4	6
	K20L3068	3/8	6
	K20L2068	1/2	6
	K20L8088	1/8	8
	K20L4088	1/4	8
	K20L3088	3/8	8
	K20L2088	1/2	8
	K20L8108	1/8	10
	K20L4108	1/4	10
	K20L3108	3/8	10
	K20L2108	1/2	10
	K20L8128	1/8	12
	K20L4128	1/4	12
K20L3128	3/8	12	
K20L2128	1/2	12	
K20L3148	3/8	14	
K20L2148	1/2	14	
K20L3168	3/8	16	
K20L2168	1/2	16	



	Cod	fil./thr.	tubo Ø
<b>K16</b> [Conex. Orientável em "L" c/Rosca BSPT - Teflon]	K168040T	1/8	4
	K164040T	1/4	4
	K168060T	1/8	6
	K164060T	1/4	6
	K163060T	3/8	6
	K162060T	1/2	6
	K168080T	1/8	8
	K164080T	1/4	8
	K163080T	3/8	8
	K162080T	1/2	8
	K168100T	1/8	10
	K164100T	1/4	10
	K163100T	3/8	10
	K162100T	1/2	10
	K168120T	1/8	12
	K164120T	1/4	12
	K163120T	3/8	12
	K162120T	1/2	12
	K163140T	3/8	14
	K162140T	1/2	14
K163160T	3/8	16	
K162160T	1/2	16	



[Conex. Orientável em "L" c/Rosca NPT Tubo INCH]



K16K630	1/8	6,35(1/4")
K16X630	1/4	6,35(1/4")
K16Y630	3/8	6,35(1/4")
K16K790	1/8	7,93(5/16")
K16X790	1/4	7,93(5/16")
K16Y790	3/8	7,93(5/16")
K16Z790	1/2	7,93(5/16")
K16X950	1/4	9,52(3/8")
K16Y950	3/8	9,52(3/8")
K16Z950	1/2	9,52(3/8")
K16X270	1/4	12,7(1/2")
K16Y270	3/8	12,7(1/2")
K16Z270	1/2	12,7(1/2")

	cod	fil./thr.	tubo Ø
<b>K16</b> [Conex. Orientável em "L" c/Rosca BSPT + Oring]	K165048	M5	4
	K166048	M6	4
	K168048	1/8	4
	K164048	1/4	4
	K165068	M5	6
	K166068	M6	6
	K168068	1/8	6
	K164068	1/4	6
	K163068	3/8	6
	K162068	1/2	6
	K168088	1/8	8
	K164088	1/4	8
	K163088	3/8	8
	K162088	1/2	8
	K168108	1/8	10
	K164108	1/4	10
	K163108	3/8	10
	K162108	1/2	10
	K168128	1/8	12
	K164128	1/4	12
	K163128	3/8	12
	K162128	1/2	12
	K163148	3/8	14
	K162148	1/2	14
	K163168	3/8	16
	K162168	1/2	16





[ 2120 ] - [ Conexões Série "K" ]

	cod	fil./thr.	tubo Ø
<b>K17</b> [Conex. em "L" c/ Rosca BSPT - Oring]	K178040T	1/8	4
	K174040T	1/4	4
	K178060T	1/8	6
	K174060T	1/4	6
	K173060T	3/8	6
	K172060T	1/2	6
	K178080T	1/8	8
	K174080T	1/4	8
	K173080T	3/8	8
	K172080T	1/2	8
	K178100T	1/8	10
	K174100T	1/4	10
	K173100T	3/8	10
	K172100T	1/2	10
	K178120T	1/8	12
	K174120T	1/4	12
	K173120T	3/8	12
	K172120T	1/2	12
	K173140T	3/8	14
	K172140T	1/2	14
K173160T	3/8	16	
K172160T	1/2	16	
	]		
	K17K630	1/8	6,35(1/4")
	K17X630	1/4	6,35(1/4")
	K17Y630	3/8	6,35(1/4")
	K17K790	1/8	7,93(5/16")
	K17X790	1/4	7,93(5/16")
	K17Y790	3/8	7,93(5/16")
	K17K950	1/8	9,52(3/8")
	K17X950	1/4	9,52(3/8")
	K17Y950	3/8	9,52(3/8")
	K17Z950	1/2	9,52(3/8")
	K17X270	1/4	12,7(1/2")
	K17Y270	3/8	12,7(1/2")
	K17Z270	1/2	12,7(1/2")



	cod	fil./thr.	tubo Ø
<b>K22</b> [Conex. em "L" Fêmea]	K225040	M5	4
	K226040	M6	4
	K228040	1/8	4
	K224040	1/4	4
	K225060	M5	6
	K226060	M6	6
	K228060	1/8	6
	K224060	1/4	6
	K223060	3/8	6
	K222060	1/2	6
	K228080	1/8	8
	K224080	1/4	8
	K223080	3/8	8
	K222080	1/2	8
	K228100	1/8	10
	K224100	1/4	10
	K223100	3/8	10
	K222100	1/2	10
	K228120	1/8	12
	K224120	1/4	12
K223120	3/8	12	
K222120	1/2	12	
K223140	3/8	14	
K222140	1/2	14	
K223160	3/8	16	
K222160	1/2	16	
	K22K630	1/8	6,35(1/4")
	K22X630	1/4	6,35(1/4")
	K22K790	1/8	7,93(5/16")
	K22X790	1/4	7,93(5/16")
	K22Y790	3/8	7,93(5/16")
	K22X950	1/4	9,52(3/8")
	K22Y950	3/8	9,52(3/8")
	K22Z950	1/2	9,52(3/8")
	K22X270	1/4	12,7(1/2")
	K22Y270	3/8	12,7(1/2")
	K22Z270	1/2	12,7(1/2")



[Conex. em "L" Fêmea c/Rosca NPT Tubo INCH]



	cod	fil./thr.	tubo Ø
<b>K17</b> [Conex. Orient. Femea em "L" K17 c/Rosca FEMEA BSP]	K175048	M5	4
	K176048	M6	4
	K178048	1/8	4
	K174048	1/4	4
	K175068	M5	6
	K176068	M6	6
	K178068	1/8	6
	K174068	1/4	6
	K173068	3/8	6
	K172068	1/2	6
	K178088	1/8	8
	K174088	1/4	8
	K173088	3/8	8
	K172088	1/2	8
	K178108	1/8	10
	K174108	1/4	10
	K173108	3/8	10
	K172108	1/2	10
	K178128	1/8	12
	K174128	1/4	12
K173128	3/8	12	
K172128	1/2	12	
K173148	3/8	14	
K172148	1/2	14	
K173168	3/8	16	
K172168	1/2	16	



	cod	fil./thr.	tubo Ø
<b>K33</b> [Conex. Em "T" Lateral Giratório c/ Rosca BSPT + Teflon]	K338040T	1/8	4
	K334040T	1/4	4
	K338060T	1/8	6
	K334060T	1/4	6
	K333060T	3/8	6
	K332060T	1/2	6
	K338080T	1/8	8
	K334080T	1/4	8
	K333080T	3/8	8
	K332080T	1/2	8
	K338100T	1/8	10
	K334100T	1/4	10
	K333100T	3/8	10
	K332100T	1/2	10
	K338120T	1/8	12
	K334120T	1/4	12
	K333120T	3/8	12
	K332120T	1/2	12
	K333140T	3/8	14
	K332140T	1/2	14
K333160T	3/8	16	
K332160T	1/2	16	
	K33K630	1/8	6,35(1/4")
	K33X630	1/4	6,35(1/4")
	K33Y630	3/8	6,35(1/4")
	K33K790	1/8	7,93(5/16")
	K33X790	1/4	7,93(5/16")
	K33Y790	3/8	7,93(5/16")
	K33K950	1/8	9,52(3/8")
	K33X950	1/4	9,52(3/8")
	K33Y950	3/8	9,52(3/8")
	K33Z950	1/2	9,52(3/8")
	K33X270	1/4	12,7(1/2")
	K33Y270	3/8	12,7(1/2")
	K33Z270	1/2	12,7(1/2")



[Conex. em "T" Lateral Giratório c/Rosca NPT Tubo INCH]



[ 2120] - [Conexões Série "K" ]

	cod	fil./thr.	tubo Ø
<b>K33</b> [Conex. em "T" Lateral Giratório c/ Rosca BSPT + Oring]	K335048	M5	4
	K336048	M6	4
	K338047	1/8	4
	K334047	1/4	4
	K335068	M5	6
	K336068	M6	6
	K338067	1/8	6
	K334067	1/4	6
	K333068	3/8	6
	K332067	1/2	6
	K338087	1/8	8
	K334087	1/4	8
	K333088	3/8	8
	K332087	1/2	8
	K338108	1/8	10
	K334107	1/4	10
	K333108	3/8	10
	K332107	1/2	10
	K338128	1/8	12
	K334127	1/4	12
K333128	3/8	12	
K332127	1/2	12	
K333147	3/8	14	
K332147	1/2	14	
K333167	3/8	16	
K332167	1/2	16	



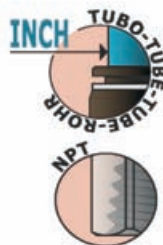
	Cod	fil./thr.	tubo Ø
<b>K40</b> [Conex. em "L" Fêmea]	K405048	M5	4
	K406048	M6	4
	K408047	1/8	4
	K404047	1/4	4
	K405068	M5	6
	K406068	M6	6
	K408067	1/8	6
	K404067	1/4	6
	K403068	3/8	6
	K402067	1/2	6
	K408087	1/8	8
	K404087	1/4	8
	K403088	3/8	8
	K402087	1/2	8
	K408108	1/8	10
	K404107	1/4	10
	K403108	3/8	10
	K402107	1/2	10
	K408128	1/8	12
	K404127	1/4	12
K403128	3/8	12	
K402127	1/2	12	
K403147	3/8	14	
K402147	1/2	14	
K403167	3/8	16	
K402167	1/2	16	



	cod	fil./thr.	tubo Ø
<b>K17</b> [Conex. Orient. Fêmea em "L" K17 c/Rosca FEMEA BSP]	K408040T	1/8	4
	K404040T	1/4	4
	K408060T	1/8	6
	K404060T	1/4	6
	K403060T	3/8	6
	K402060T	1/2	6
	K408080T	1/8	8
	K404080T	1/4	8
	K403080T	3/8	8
	K402080T	1/2	8
	K408100T	1/8	10
	K404100T	1/4	10
	K403100T	3/8	10
	K402100T	1/2	10
	K408120T	1/8	12
	K404120T	1/4	12
	K403120T	3/8	12
	K402120T	1/2	12
	K403140T	3/8	14
	K402140T	1/2	14
K403160T	3/8	16	
K402160T	1/2	16	
<b>[Conex. em "T" Central Giratório c/ Rosca NPT Tubo INCH]</b>	K40K630	1/8	6,35(1/4")
	K40X630	1/4	6,35(1/4")
	K40Y630	3/8	6,35(1/4")
	K40K790	1/8	7,93(5/16")
	K40X790	1/4	7,93(5/16")
	K40Y790	3/8	7,93(5/16")
	K40K950	1/8	9,52(3/8")
	K40X950	1/4	9,52(3/8")
	K40Y950	3/8	9,52(3/8")
	K40Z950	1/2	9,52(3/8")
	K40X270	1/4	12,7(1/2")
	K40Y270	3/8	12,7(1/2")
	K40Z270	1/2	12,7(1/2")



	cod	fil./thr.	tubo Ø
<b>K41</b> [Conex. em "T" Central Giratório c/Rosca FEMEA BSP]	K415040	M5	4
	K416040	M6	4
	K418040	1/8	4
	K414040	1/4	4
	K415060	M5	6
	K416060	M6	6
	K418060	1/8	6
	K414060	1/4	6
	K413060	3/8	6
	K412060	1/2	6
	K418080	1/8	8
	K414080	1/4	8
	K413080	3/8	8
	K412080	1/2	8
	K418100	1/8	10
	K414100	1/4	10
	K413100	3/8	10
	K412100	1/2	10
	K418120	1/8	12
	K414120	1/4	12
K413120	3/8	12	
K412120	1/2	12	
K413140	3/8	14	
K412140	1/2	14	
K413160	3/8	16	
K412160	1/2	16	
<b>[Conex. em "T" Central Giratório c/Rosca FEMEA NPT Tubo INCH]</b>	K41K630	1/8	6,35(1/4")
	K41X630	1/4	6,35(1/4")
	K41K790	1/8	7,93(5/16")
	K41X790	1/4	7,93(5/16")
	K41Y790	3/8	7,93(5/16")
	K41X950	1/4	9,52(3/8")
	K41Y950	3/8	9,52(3/8")
	K41Y270	3/8	12,7(1/2")
	K41Z270	1/2	12,7(1/2")





[ 2120] - [Conexões Série "K"]

	Cod	fil./thr.	Tubo Ø
<b>K34</b> [Conex. em "Y" Central Giratorio c/Rosca BSPT - Teflon]	K348040T	1/8	4
	K344040T	1/4	4
	K348060T	1/8	6
	K344060T	1/4	6
	K343060T	3/8	6
	K342060T	1/2	6
	K348080T	1/8	8
	K344080T	1/4	8
	K343080T	3/8	8
	K342080T	1/2	8
	K348100T	1/8	10
	K344100T	1/4	10
	K343100T	3/8	10
	K342100T	1/2	10
	K348120T	1/8	12
	K344120T	1/4	12
	K343120T	3/8	12
	K342120T	1/2	12
	K343140T	3/8	14
	K342140T	1/2	14
K343160T	3/8	16	
K342160T	1/2	16	
[Conex. em "Y" Central Giratorio c/Rosca NPT Tubo INCH]	K34K630	1/8	6,35(1/4")
	K34X630	1/4	6,35(1/4")
	K34Y630	3/8	6,35(1/4")
	K34K790	1/8	7,93(5/16")
	K34X790	1/4	7,93(5/16")
	K34Y790	3/8	7,93(5/16")
	K34X950	1/4	9,52(3/8")
	K34Y950	3/8	9,52(3/8")
	K34Z950	1/2	9,52(3/8")
	K34X270	1/4	12,7(1/2")
	K34Y270	3/8	12,7(1/2")
	K34Z270	1/2	12,7(1/2")



	cod	fil./thr.	tubo Ø
<b>K34</b> [Conex. Orient. Femea em "L" K17 c/Rosca FEMEA BSP]	K345048	M5	4
	K346048	M6	4
	K348047	1/8	4
	K344047	1/4	4
	K345068	M5	6
	K346068	M6	6
	K348067	1/8	6
	K344067	1/4	6
	K343068	3/8	6
	K342067	1/2	6
	K348087	1/8	8
	K344087	1/4	8
	K343088	3/8	8
	K342087	1/2	8
	K348108	1/8	10
	K344107	1/4	10
	K343108	3/8	10
	K342107	1/2	10
	K348128	1/8	12
	K344127	1/4	12
K343128	3/8	12	
K342127	1/2	12	
K343147	3/8	14	
K342147	1/2	14	
K343167	3/8	16	
K342167	1/2	16	
[ União Retas ]	Cod	tubo Ø	
	K500040	4	
	K500060	6	
	K500080	8	
	K500100	10	
	K500120	12	
	K500140	14	
	K500160	16	
[ União Retas Tubo INCH ]	K500630	6,35(1/4")	
	K500790	7,93(5/16")	
	K500950	9,52(3/8")	
	K500270	12,7(1/2")	



	Cod	tubo Ø
<b>K60</b> [ Uniao em "L" ]	K600040	4
	K600060	6
	K600080	8
	K600100	10
	K600120	12
	K600140	14
	K600160	16
	K600630	6,35(1/4")
	K600790	7,93(5/16")
	K600950	9,52(3/8")
K600270	12,7(1/2")	



	Cod	tubo A	tubo B
<b>K70</b> [ Uniao em "T" ]	K700040	4	4
	K700060	6	6
	K700080	8	8
	K700100	10	10
	K700120	12	12
	K700140	14	14
	K700160	16	16
	K704060	4	6
	K706080	6	8
	K708100	8	10
	K701120	10	12
	K702160	12	16
[ Uniao em "T" ]	K700630	6,35(1/4")	6,35(1/4")
	K700790	7,93(5/16")	7,93(5/16")
	K700950	9,52(3/8")	9,52(3/8")
	K700270	12,7(1/2")	12,7(1/2")
	K7063790	6,35(1/4")	7,93(5/16")
	K7063950	6,35(1/4")	9,52(3/8")
	K7079950	7,93(5/16")	9,52(3/8")
	K7095270	9,52(3/8")	12,7(1/2")



	Cod	tubo Ø
<b>K26</b> [ Uniao em "X" ]	K260040	4
	K260060	6
	K260080	8
	K260100	10
	K260120	12



	Cod	tubo A	tubo B
<b>K51</b> [ Uniao em "Y" ]	K510040	4	4
	K510060	6	6
	K510080	8	8
	K510100	10	10
	K510120	12	12
	K510140	14	14
	K510160	16	16
	K514060	4	6
	K516080	6	8
	K518100	8	10
	K511120	10	12
	K512160	12	16
[ Uniao em "Y" Tubo INCH ]	K510630	6,35(1/4")	6,35(1/4")
	K510790	7,93(5/16")	7,93(5/16")
	K510950	9,52(3/8")	9,52(3/8")
	K510270	12,7(1/2")	12,7(1/2")
	K5163790	6,35(1/4")	7,93(5/16")
K5163950	6,35(1/4")	9,52(3/8")	
K5179950	7,93(5/16")	9,52(3/8")	
K5179270	7,93(5/16")	12,7(1/2")	
K5195270	9,52(3/8")	12,7(1/2")	





[ 2120] - [Conexões Série "K" ]

**K24** [ Uniao de Reducao Reta ]

Cod	tubo A	tubo B
K244060	4	6
K246080	6	8
K248100	8	10
K241120	10	12
K242160	12	16



[ Uniao de Reducao Reta Tubo INCH ]

Cod	tubo A	tubo B
K2463790	6,35(1/4")	7,93(5/16")
K2463950	6,35(1/4")	9,52(3/8")
K2479950	7,93(5/16")	9,52(3/8")
K2479270	7,93(5/16")	12,7(1/2")
K2495270	9,52(3/8")	12,7(1/2")



**K57** [ Inseto em "T" Central c/Espiga ]

Cod	tubo A	tubo B
K574060	4	6
K574080	4	8
K576080	6	8
K576100	6	10
K578100	8	10
K578120	8	12
K571120	10	12
K572160	12	16



[ Inseto em "T" Central c/Espiga c/Tubo INCH ]

Cod	tubo A	tubo B
K570630	6,35(1/4")	6,35(1/4")
K570790	7,93(5/16")	7,93(5/16")
K570950	9,52(3/8")	9,52(3/8")
K570270	12,7(1/2")	12,7(1/2")



**K12** [ TAPPAO ]

Cod	Tubo Ø
K120040	4
K120060	6
K120080	8
K120100	10
K120120	12
K120140	14
K120160	16



**K58** [ Inseto em "T" Lateral c/ Espiga ]

Cod	tubo A	tubo B
K584060	4	6
K584080	4	8
K586080	6	8
K586100	6	10
K588100	8	10
K588120	8	12
K581120	10	12
K582160	12	16




[ Inseto em "T" Lateral c/ Espiga c/Tubo INCH ]

Cod	tubo A	tubo B
K580630	6,35(1/4")	6,35(1/4")
K580790	7,93(5/16")	7,93(5/16")
K580950	9,52(3/8")	9,52(3/8")
K580270	12,7(1/2")	12,7(1/2")



**K12** [ EMENDA Intermedia ]


Cod	tubo A	tubo B
K210040	4	4
K210060	6	6
K210080	8	8
K210100	10	10
K210120	12	12
K210160	16	16



Cod	tubo A	tubo B
K214060	4	6
K214080	4	8
K216080	6	8
K216100	6	10
K218100	8	10
K218120	8	12
K211120	10	12
K212160	12	16


**K53** [ Inseto em "Y" Central c/Espiga ]

Cod	tubo A	tubo B
K530040	4	4
K530060	6	6
K530080	8	8
K530100	10	10
K530120	12	12
K530140	14	14
K530160	16	16



[ Inseto em "Y" Central c/Espiga c/Tubo INCH ]

Cod	tubo A	tubo B
K530630	6,35(1/4")	6,35(1/4")
K530790	7,93(5/16")	7,93(5/16")
K530950	9,52(3/8")	9,52(3/8")
K530270	12,7(1/2")	12,7(1/2")



**K25** [ EMENDA em Uniao ]

Cod	tubo A	tubo B
K254060	4	6
K254080	4	8
K256080	6	8
K256100	6	10
K258100	8	10
K258120	8	12
K251120	10	12
K252160	12	16



**K54** [ Inseto em "L" c/Espiga ]

Cod	tubo A	tubo B
K544060	4	6
K544080	4	8
K546080	6	8
K546100	6	10
K548100	8	10
K548120	8	12
K541120	10	12
K541160	12	16




[ Inseto em "L" c/Espiga c/Tubo INCH ]

Cod	tubo A	tubo B
K540630	6,35(1/4")	6,35(1/4")
K540790	7,93(5/16")	7,93(5/16")
K540950	9,52(3/8")	9,52(3/8")
K540270	12,7(1/2")	12,7(1/2")




**K80** [ Uniao Reta Tubo/Tubo p/Painel ]

Cod	Tubo Ø
K800040	4
K800060	6
K800080	8
K800100	10
K800120	12
K800140	14
K800160	16



[ Uniao Reta Tubo/Tubo p/Painel c/Tubo INCH ]

Cod	tubo A	tubo B
K800630	6,35(1/4")	6,35(1/4")
K800790	7,93(5/16")	7,93(5/16")
K800950	9,52(3/8")	9,52(3/8")
K800270	12,7(1/2")	12,7(1/2")





[ 2120 ] - [ Conexões Série "K" ]

**K81** [ Uniao Reta FEMEA p/Painel ]

Cod	tubo A	tubo B
K815040	M5	4
K816040	M6	4
K818040	1/8	4
K814040	1/4	4
K813060	M5	6
K812060	M6	6
K818080	1/8	6
K814080	1/4	6
K813060	3/8	6
K812060	1/2	6
K818080	1/8	8
K814080	1/4	8
K813080	3/8	8
K812080	1/2	8
K818100	1/8	10
K814100	1/4	10
K813100	3/8	10
K812100	1/2	10
K818120	1/8	12
K814120	1/4	12
K813120	3/8	12
K812120	1/2	12
K813140	3/8	14
K812140	1/2	14
K813160	3/8	16
K812160	1/2	16





[ Uniao Reta FEMEA p/Painel c/Tubo INCH ]

Cod	tubo A	tubo B
K81K630	1/8	6,35(1/4")
K81X630	1/4	6,35(1/4")
K81K790	1/8	7,93(5/16")
K81X790	1/4	7,93(5/16")
K81Y790	3/8	7,93(5/16")
K81X950	1/4	9,52(3/8")
K81Y950	3/8	9,52(3/8")
K81Y270	3/8	12,7(1/2")
K81Z270	1/2	12,7(1/2")



**K19** [ Distribuidor 5 Vias Tubo Eguais/Rosca BSPT - Teflon ]

Cod	fil./thr.	Tubo B-A
K198060T	1/8	6
K194060T	1/4	6
K193060T	3/8	6
K198080T	1/8	8
K194080T	1/4	8
K193080T	3/8	8
K198640T	1/8	6-4
K194840T	1/4	8-4
K194860T	1/4	8-6
K194180T	1/4	10-8
K193180T	3/8	10-8

**K19** [ Distribuidor 5 Vias Tubo Eguais/Rosca BSP + Oring ]

Cod	fil./thr.	Tubo B-A
K198067	1/8	6
K194067	1/4	6
K193068	3/8	6
K198087	1/8	8
K194087	1/4	8
K193088	3/8	8
K198647	1/8	6-4
K194847	1/4	8-4
K194867	1/4	8-6
K194187	1/4	10-8
K193187	3/8	10-8




**K18** [ Distribuidor 5 Vias Tubo/Tubo ]

Cod	tubo A	tubo B
K180040	4	4
K180060	6	6
K180080	8	8
K184060	4	6
K184080	4	8
K186080	6	8
K186100	6	10
K188100	8	10





# REGULADORAS DE VELOCIDADE

FLOW REGULATORS  
REGULATEURS DE DEBIT  
DROSSELVERSCHRAUBUNGEN

**PARAFUSO DE AJUSTE TIPO MANÍPULO**  
ADJUSTING KNOB  
VIS DE REGLAGE A BOUTON  
EINSTELLSPINDEL MIT HANDRAD



**TUBO - TUBE - TUBE - SCHLAUCH**

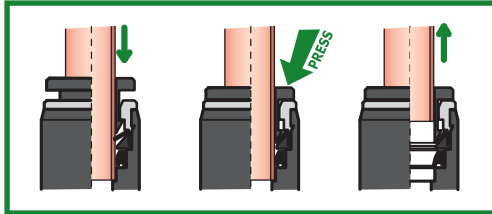
**TIPOS DE TUBOS RECOMENDADOS**  
TUBES D'ACCOUPLMENT  
SUITABLE FOR  
SCHLAUCHTYPEN

**POLIURETANO  
NYLON (PA6)  
RILSAN (PA11)**

**Ø4÷Ø10 (±0,05) - Ø12 (±0,1)**

**Sistema de ACOPLAMENTO /DESACOPLAMENTO DO TUBO**

type of TUBE COUPLING  
type d'ACCROCHEMENT TUBE  
FUNKTIONSWEISE



**O-RING/VEDAÇÕES**  
OIL-PROOF RUBBER  
JOINTS  
DICHTUNGEN

**SEM SILICONE**  
SILICONE FREE  
LIBRES DE SILICONE  
LABSFREI

**REGULAGEM PARA O CILINDRO**  
REGULATOR FOR CYLINDER  
REGULATEUR POUR VERIN  
ABLUFTRDROSSEL (FÜR ZYLINDER)

**REGULAGEM PARA VÁLVULA**  
REGULATOR FOR VALVE  
REGULATEUR POUR VANNE  
ZULUFTDROSSEL (FÜR VENTIL)

**CONECTOR ROSCADO**  
THREADED CONNECTOR  
CONNEXION FILETEE  
GEWINDEANSCHLUSS

**ROSCA CILINDRICA COM O-RING**  
PARALLEL THREAD WITH O-RING  
FILET CYLINDRIQUE AVEC JOINT MONTE  
ZYLINDRISCHES GEWINDE MIT O-RING

**ROSCA MÉTRICA COM O-RING**  
METRIC THREAD WITH O-RING  
FILET METRIQUE AVEC JOINT MONTE  
METRISCHES GEWINDE MIT O-RING

**ROSCA CÔNICA COM TEFLON**  
TAPERED THREAD WITH PTFE  
FILET CONIQUE AVEC TEFLON  
KONISCHES GEWINDE MIT TEFLON

<p><b>CARACTERÍSTICAS TÉCNICAS</b> LATÃO NIQUELADO TECNOPOLÍMERO ZAMA NIQUELADA PINÇA INO X VEDAÇÕES EM NBR ANTÍÓLEO PRES SÃO MAX DE TRABALHO: 10 BAR (1 MPa) a) TEMPERA TURA DE TRABALHO: 0°C (273°K), +60°C (333°K)</p>	<p><b>TECHNICAL FEATURES</b> NICKEL-PLATED BRASS TECHNOPOLYMER NICKEL-PLATED ZAMA STAINLESS STEEL PLIERS OIL-PROOF RUBBER PACKINGS NBR MAX WORKING PRESSURE: 10 BAR (1 MPa) WORKING TEMPERATURE: 0°C (273°K), +60°C (333°K)</p>
<p><b>CARACTERISTIQUES TECHNIQUES</b> LAIION NICKELE TECNOPOLYMERE ZAMA NICKELEEE PINCE EN ACIER INOX JOINTS EN CAOUTCHOUX ANTI-HUILE NBR PRESSION MAXI D'EXERCICE: 10 BAR (1 MPa) TEMPERATURE DE TRAVAIL: 0°C (273°K), +60°C (333°K)</p>	<p><b>TECHNISCHE DATEN</b> MESSING, VERNICKELT TECHNOPOLYMER ZAMAK, VERNICKELT ZAHNSCHEIBE AUS EDELSTAHL DICHTUNGEN NBR, ÖLBESTÄNDIG HÖCHSTBETRIEBSDRUCK: 10 BAR (1 MPa) BETRIEBSTEMPERATUREN: 0°C (273°K), +60°C (333°K)</p>





serie **SK**

**REGULADORES DE VELOCIDADE**

FLOW REGULATORS - REGULATEURS DE DEBIT - DROSSELVERSCHRAUBUNG

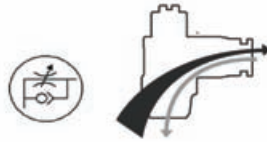


[ 2230 ] - [REGULADORAS de VELOCIDADE Serie "K" ]

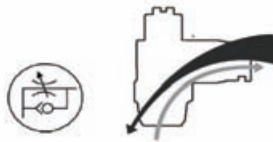
**KD**  
**KR**



[ Reguladoras p/Cilindro c/Rosca BSPT - Teflon ]



[ Reguladoras p/Valvula c/Rosca BSPT - Teflon ]

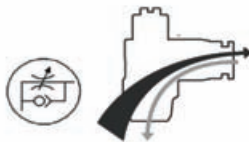


Cod	fil./thr.	Tubo B-A
KD8040T	1/8	4
KD4040T	1/4	4
KD8060T	1/8	6
KD4060T	1/4	6
KD3060T	3/8	6
KD2060T	1/2	6
KD8080T	1/8	8
KD4080T	1/4	8
KD3080T	3/8	8
KD2080T	1/2	8
KD8100T	1/8	10
KD4100T	1/4	10
KD3100T	3/8	10
KD2100T	1/2	10
KD4120T	1/4	12
KD3120T	3/8	12
KD2120T	1/2	12
KR8040T	1/8	4
KR4040T	1/4	4
KR8060T	1/8	6
KR4060T	1/4	6
KR3060T	3/8	6
KR2060T	1/2	6
KR8080T	1/8	8
KR4080T	1/4	8
KR3080T	3/8	8
KR2080T	1/2	8
KR8100T	1/8	10
KR4100T	1/4	10
KR3100T	3/8	10
KR2100T	1/2	10
KR4120T	1/4	12
KR3120T	3/8	12
KR2120T	1/2	12

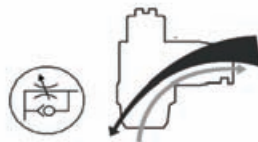
**KD**  
**KR**



[ Reguladoras p/Cilindro c/Rosca BSP + Oring ]



[ Reguladoras p/Valvula c/Rosca BSP + Oring ]



Cod	fil./thr.	Tubo B-A
KD5048	M5	4
KD6048	M6	4
KD8048	1/8	4
KD4048	1/4	4
KD5068	M5	6
KD8068	1/8	6
KD4068	1/4	6
KD3068	3/8	6
KD2068	1/2	6
KD8088	1/8	8
KD4088	1/4	8
KD3088	3/8	8
KD2088	1/2	8
KD8108	1/8	10
KD4108	1/4	10
KD3108	3/8	10
KD2108	1/2	10
KD4128	1/4	12
KD3128	3/8	12
KD2128	1/2	12
KR5048	M5	4
KR6048	M6	4
KR8048	1/8	4
KR4048	1/4	4
KR5068	M5	6
KR8068	1/8	6
KR4068	1/4	6
KR3068	3/8	6
KR2068	1/2	6
KR8088	1/8	8
KR4088	1/4	8
KR3088	3/8	8
KR2088	1/2	8
KR8108	1/8	10
KR4108	1/4	10
KR3108	3/8	10
KR2108	1/2	10
Kr4128	1/4	12
KR3128	3/8	12
KR2128	1/2	12

**KD**  
**KR**



[ Reguladoras p/Cilindro Tubo/Tubo ]

[ Reguladoras p/Valvula Tubo/Tubo ]

Cod	fil./thr.	Tubo B-A
KKLD0040	4	4
KLD0060	6	6
KLD0080	8	8
KLD0100	10	10
KLD0120	12	12
KLR0040	4	4
KLR0060	6	6
KLR0080	8	8
KLR0100	10	10
KLR0120	12	12





# VÁLVULAS COMANDO MANUAL

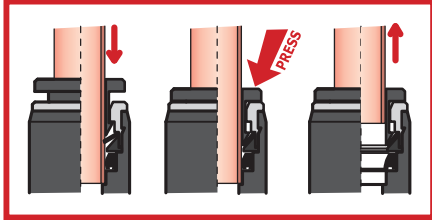
## MANUALLY OPERATED VALVES

### VANNE MANUELLE

### VENTIL MANUELL BETÄTIGT

#### Tipo de ACOPLAMENTO / DESACOPLAMENTO TUBO

type of TUBE COUPLING  
type d'ACCROCHEMENT TUBE  
FUNKTIONSWEISE



#### TUBO - TUBE - TUBE - SCHLAUCH

##### TIPOS DE TUBOS RECOMENDADOS

TUBES D'ACCOUPEMENT  
SUITABLE FOR  
SCHLAUCHTYPEN

**POLIURETANO**  
**NYLON (PA6)**  
**RILSAN (PA11)**

Ø4÷Ø10 (±0,05) - Ø12÷Ø16 (±0,1)

**O-RING/ VEDAÇÕES**  
OIL-PROOF RUBBER  
JOINTS  
DICHTUNGEN



**SEM SILICONE**  
SILICONE FREE  
LIBRES DE SILICONE  
LABSFREI

**ROSCA**  
THREAD  
FILET  
GEWINDE



**ROSCA CÔNICA COM TEFLON**  
TAPERED THREAD WITH PTFE  
FILET CONIQUE AVEC TEFLON  
KONISCHES GEWINDE MIT TEFLON



A CONFIGURAÇÃO REVOLUCIONÁRIA DE A SSENT AMENT O DE ROSCA DA SÉRIE EA SY gar ante uma perfeita vedação através de um O-RING mesmo em sedes roscadas imperfeitas (patente Sistem Pneumática)

The SEAL SYSTEM WITH O-RING ON THE THREAD ensures the minimum hindrance of the outside hexagonal key and it grants sure applications on imperfect threaded seats (SISTEM PNEUMÁTICA patent).

Le SYSTEME D'ETANCHEITE AVEC O-RING SUR LE FILETAGE assure le minimum encombrement de la def hexagonale extérieure et il garanti applications sûres sur sièges filetés imparfaites.

Die KAMMERUNG DES O-RING (SISTEM PNEUMÁTICA-Patent) der EASY-Verschraubung ermöglicht eine Dichtung auch bei fehlerhaftem Gewinde.



#### CHANFRO GRANDE DE INTRODUÇÃO

BIG INVITATION CHAMFER of the female thread.  
Arrondissement GRAND D'INVITATION sur le filetage femelle.  
Innengewinde mit GROSSER SENKUNG.



#### CHANFRO PEQUENO DE INTRODUÇÃO

SMALL INVITATION CHAMFER of the female thread.  
Arrondissement PETIT D'INVITATION sur le filetage femelle.  
Innengewinde mit GERINGER SENKUNG.

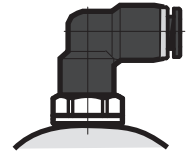


#### ROSCA NÃO PERPENDICULAR AO PLANO

Thread NOT PERPENDICULAR to the substructure.  
Filetage PAS PERPENDICULAIRE au plan de pose.  
Innengewinde mit NEIGUNG ZUR OBERFLÄCHE.

#### SOBRE SUPERFÍCIES CURVAS

Thread on CURVED SURFACES  
Filetage sur SURFACES COURBES  
Gewinde an runden OBERFLÄCHEN



## VÁLVULA 3/2 COMANDO MANUAL SÉRIE K

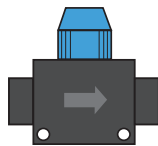
### TAP 3/2 HAND CONTROL

### COUPLEUR 3/2 A COMMANDE MANUEL

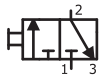
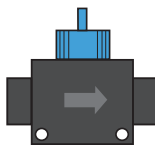
### 3/2-WEGE-ENTLÜFTUNGSKUGELHAHN



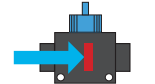
SELET OR ABER TO  
SELECTOR OPEN  
SELECTEUR OUVERT  
DREHKNOFF GEÖFFNET



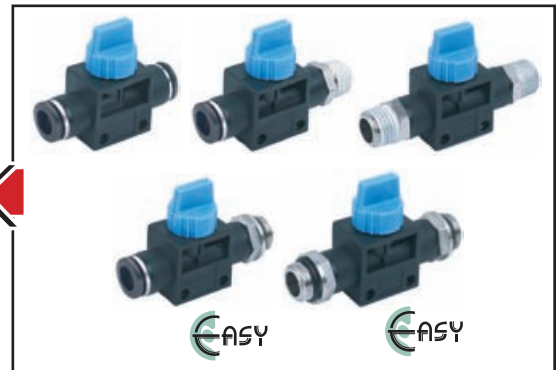
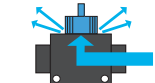
SELET OR FECHADO  
SELECTOR CLOSED  
SELECTEUR FERME  
DREHKNOFF GESCHLOSSEN



PASSAGEM DA ENTRADA  
SHIFT ADJUSTED  
CHANGEMENT ADAPTEE  
DURCHFLOSSRICHTUNG



PASSAGEM DA SÍBIA  
STEP BACK  
PAS EN ARRIERE  
RÜCKFLUSS



#### CARACTERÍSTICAS TÉCNICAS

LATÃO NIQUELADO  
TECNOPOLÍMERO  
ZAMA NIQUELADA  
PINÇA INOX  
VEDAÇÕES EM NBR ANTÍÓLEO  
PRESSÃO MÁX DE TRABALHO: 10 BAR (1 MPa)  
TEMPERATURA DE TRABALHO: 0°C (273°K), +60°C (333°K)

#### CARACTERÍSTICAS TECHNIQUES

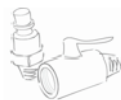
LATON NICKELÉ  
TECNOPOLYMÈRE  
ZAMA NICKELÉE  
PINCE EN ACIER INOX  
JOINTS EN CAOUTCHOUC ANTI-HUILE NBR  
PRESSION MAXI D'EXERCICE: 10 BAR (1 MPa)  
TEMPERATURE DE TRAVAIL: 0°C (273°K), +60°C (333°K)

#### TECHNICAL FEATURES

NICKEL-PLATED BRASS  
TECHNOPOLYMER  
NICKEL-PLATED ZAMA  
STAINLESS STEEL PLIERS  
OIL-PROOF RUBBER PACKINGS NBR  
MAX WORKING PRESSURE: 10 BAR (1 MPa)  
WORKING TEMPERATURE: 0°C (273°K), +60°C (333°K)

#### TECHNISCHE DATEN

MESSING, VERNICKELT  
TECHNOPOLYMER  
ZAMAK, VERNICKELT  
ZAHNSCHEIBE AUS EDELSTAHL  
DICHTUNGEN NBR, ÖLBESTÄNDIG  
HÖCHSTBETRIEBSDRUCK: 10 BAR (1 MPa)  
BETRIEBSTEMPERATUREN: 0°C (273°K), +60°C (333°K)



[ 2440 ] - [ VALVULAS de FECHAMENTO 2/3 Vias Serie "K" ]



**KRTT** [ Valvulas Fech.2/3 Vias Tubo/Tubo ]

Cod	fil./thr.	Tubo Ø
KRTT0060	6	6
KRTT0080	8	8
KRTT0100	10	10
KRTT0120	12	12
KRTT6080	6	8
KRTT8100	8	10
KRTT1120	10	12





**KRTF** [ Valvulas Fech.2/3 Vias Rosca BSP + Oring/Tubo ]

Cod	fil./thr.	Tubo Ø
KRFT8067	1/8	6
KRFT4067	1/4	6
KRFT3068	3/8	6
KRFT8087	1/8	8
KRFT4087	1/4	8
KRFT3088	3/8	8
KRFT4107	1/4	10
KRFT3108	3/8	10
KRFT2107	1/2	10
KRFT4127	1/4	12
KRFT3128	3/8	12
KRFT2127	1/2	12



**KRTF** [ Valvulas Fech.2/3 Vias Tubo/Rosca BSPT - Teflon ]

Cod	fil./thr.	Tubo Ø
KRTF8060T	1/8	6
KRTF4060T	1/4	6
KRTF3060T	3/8	6
KRTF8080T	1/8	8
KRTF4080T	1/4	8
KRTF3080T	3/8	8
KRTF4100T	1/4	10
KRTF3100T	3/8	10
KRTF2100T	1/2	10
KRTF4120T	1/4	12
KRTF3120T	3/8	12
KRTF2120T	1/2	12



**KRFF** [ Valvulas Fech.2/3 Vias Rosca/Rosca BSPT - Teflon ]

Cod	fil./thr.	Tubo Ø
KRFF880T	1/8	1/8
KRFF440T	1/4	1/4
KRFF330T	3/8	3/8
KRFF220T	1/2	1/2
KRFF480T	1/4	1/8
KRFF340T	3/8	1/4
KRFF230T	1/2	3/8



**KRTF** [ Valvulas Fech.2/3 Vias Tubo/Rosca BSP + Oring ]

Cod	fil./thr.	Tubo Ø
KRTF8067	1/8	6
KRTF4067	1/4	6
KRTF3068	3/8	6
KRTF8087	1/8	8
KRTF4087	1/4	8
KRTF3088	3/8	8
KRTF4107	1/4	10
KRTF3108	3/8	10
KRTF2107	1/2	10
KRTF4127	1/4	12
KRTF3128	3/8	12
KRTF2127	1/2	12



**KRFF** [ Valvulas Fech.2/3 Vias Rosca/Rosca BSP + Oring ]

Cod	fil./thr.	Tubo Ø
KRFF887	1/8	1/8
KRFF447	1/4	1/4
KRFF338	3/8	3/8
KRFF227	1/2	1/2
KRFF487	1/4	1/8
KRFF348	3/8	1/4
KRFF238	1/2	3/8

**KRTF** [ Valvulas Fech.2/3 Vias Tubo/Rosca BSP + Oring ]

Cod	fil./thr.	Tubo Ø
KRFT8060T	1/8	6
KRFT4060T	1/4	6
KRFT3060T	3/8	6
KRFT8080T	1/8	8
KRFT4080T	1/4	8
KRFT3080T	3/8	8
KRFT4100T	1/4	10
KRFT3100T	3/8	10
KRFT2100T	1/2	10
KRFT4120T	1/4	12
KRFT3120T	3/8	12
KRFT2120T	1/2	12





Linha **SK**

**Matriz - Caxias do Sul/RS**

Rua Padre Ambrósio Pieratelli, 454 - Pavilhão A - Bairro Kayser  
Caxias do Sul - RS - Brasil - CEP 95098-380  
Fone: (54) 3213-3733 - Fax: (54) 3213-5580  
E-mail: vendasistem@terra.com.br

**Filial - Jundiaí/SP**

Rua Antonio Zandoná, 580  
Vila Santana - CEP 13219-030 - Jundiaí - SP  
Fone/Fax: (11) 4587-5009  
E-mail: sistem.sp@sistemdobrasil.com.br